

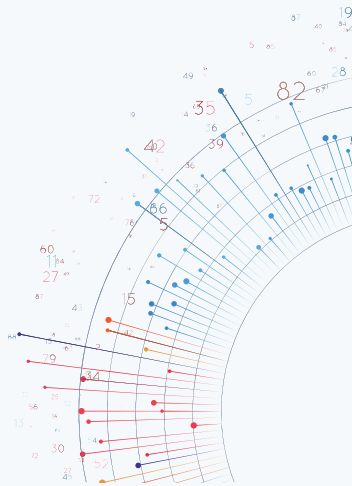


www.wellcoms.eu

Drilling & Geology Data Solutions

Interoperable real-time data
workflows for service companies

WELLCOMS



INTEGRATE FAST WITH
OPERATOR ENVIRONMENTS.

DELIVER CONSISTENT,
TRUSTED REAL-TIME DATA.

OUR SERVICES

Cutting-edge technologies for the drilling industry

SUBSURFACE DATA MANAGEMENT

WITSML™ Server Pro for real-time well data standardization and secure transmission across your operations.

INDUSTRY STANDARDS

WITSML™, ETP protocols and standards compliance for seamless data integration and interoperability.

ADVANCED VISUALIZATION

Interactive dashboards and real-time monitoring for comprehensive drilling operations insights.

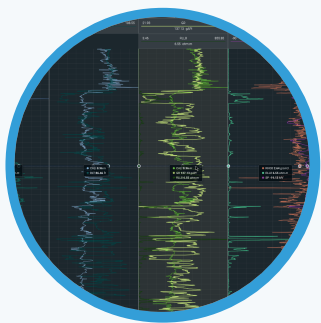
DRILLING INTELLIGENCE

AI-powered analytics and KPI monitoring for predictive insights and optimized performance.



FOR EVERY PROJECT WE HAVE A SOLUTION

Complete solutions for the oil and gas industry



WELL DATA HUB

A UNIFIED VIEW OF YOUR WELLS, FROM DATA TO DECISIONS.

Well Data Hub centralizes, monitors, and secures all your data flows in real time. Ensure seamless system interoperability, manage access with precision, and explore or replay drilling data with confidence. Designed for engineering, operations, and digital integration teams in the oil and gas industry, Well Data Hub delivers a single source of truth for smarter, faster decision-making.

ENERGISTICS® TRANSFER PROTOCOL (ETP) 1.1/1.2

ETP 1.1 / WITSML™ 1.4.1.1

ETP 1.2 / WITSML™ 2.1

Recognized experts in ETP and WITSML, we provide a complete implementation. The only provider on the market to have implemented 100% of the ETP sub-protocols, we guarantee high-frequency real-time bidirectional streaming, full CRUD operations on the server store, end-to-end interoperability and tailored integrations, backed by industrial performance testing and dedicated 24/7 support .

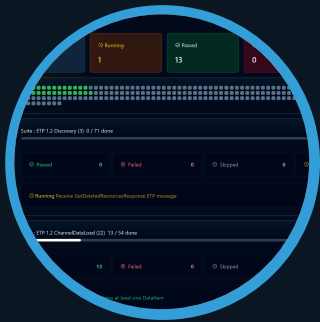


WITSML SOAP SERVER

1.3 / 1.4 WITSML STANDARD 100% COMPLIANCE SOAP

Our WITSML SOAP Server delivers fast response times and scales seamlessly to match your operational needs. It fully implements the WITSML 1.3 and 1.4 standards, with on-demand unit conversion and configurable default units to ensure consistent data delivery.

The platform provides fine-grained user access control and flexible security policies



ETP & WITSML™ TEST BENCH

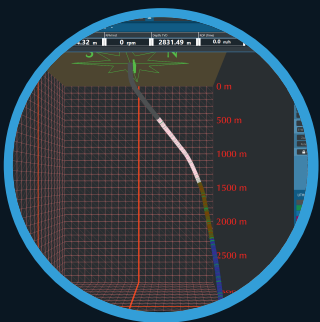
COMPREHENSIVE PROTOCOL VALIDATION & COMPLIANCE PLATFORM

Audit ETP & WITSML™ validates server implementations across legacy and modern protocol stacks, performs deep data validation to ensure interoperability, benchmarks performance under realistic workloads, and guides organizations through OSDU® certification readiness. Designed for software vendors, system integrators, and operators who need confidence in their WITSML™ and ETP compliance

ETP RELAY

A FAST GATEWAY FROM SOAP TO ETP COMPATIBILITY.

ETP Relay lets you use ETP immediately without replacing existing SOAP servers already in operation. Deployment is fast: simply enter the SOAP server URL and credentials, and the gateway automatically translates exchanges for ETP-compatible equipment. It regularly queries the target server to emulate ETP streaming mode and converts WITSML 1.4.1.1 data into WITSML 2.1.



CUSTOM-DESIGNED SOLUTIONS

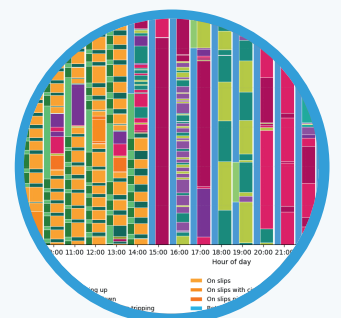
BUILT FOR FIELD REALITIES

We develop tailor-made solutions to meet our clients' specific needs with precision. Thanks to our dual expertise in software development and drilling, we understand operational constraints, reliability challenges, and the technical requirements of the field. Bringing together digital experts and domain specialists, we are able to design tools perfectly suited to your uses, processes, and environment.

WELL KPI SERVICE

DRIVING WELL PERFORMANCE THROUGH DATA.

Well KPI Service is a complete analytics solution designed to centralize KPI calculation, monitor critical thresholds, and leverage historical data to identify temporal trends. With interactive dashboards, clear indicator visualization, and targeted alerts, teams gain a reliable, continuous, and actionable view of operational performance.



READY TO DEPLOY ?

Deliver consistent drilling data across rigs
without slowing down operations.



Contact Us

Tell us your constraints and your targets.
We'll help you deploy a scalable workflow
that fits your customers' ecosystems.



contact@wellcoms.fr
support@wellcoms.fr
www.wellcoms.eu



Maisonneuve, Chemin de Bel Air
07230 Chandolas, France

BUSINESS PROPOSAL

Vendor-neutral real-time
data workflows
for service companies

WELLCOMS

