



[www.wellcoms.eu](http://www.wellcoms.eu)

# Drilling & Geology Data Solutions

Interoperable real-time data  
workflows for service companies

WELLCOMS

RELIABILITY

RESPONSIVENESS

ADAPTABILITY



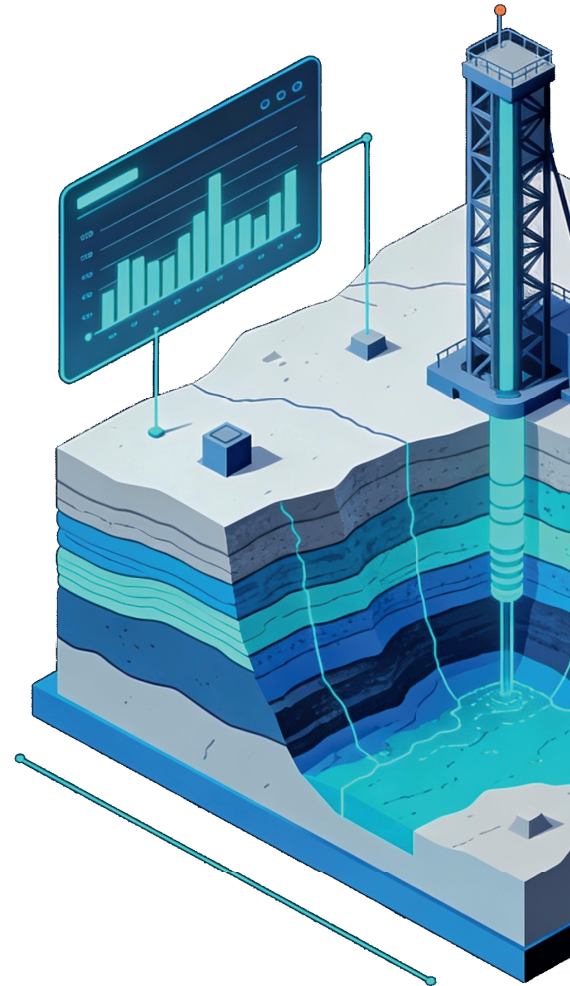
# ABOUT COMPANY

For over 20 years, our company has specialized in the management and transfer of drilling data for the oil and gas industry. We support drilling operations by ensuring that critical data flows reliably, securely, and in real time between field operations and decision-makers.

Working with major oil companies around the world, we provide trusted services that help optimize drilling performance and maintain operational continuity. Our experience across diverse environments and international projects allows us to adapt quickly to the specific needs of each operation.

At the heart of our company is a team of dedicated problem solvers. Our specialists are known for their responsiveness, technical expertise, and ability to handle complex operational challenges. Whether supporting ongoing drilling activities or responding to unexpected issues, we focus on delivering fast and effective solutions.

By combining global experience, technical excellence, and a strong service mindset, we ensure that our clients can rely on accurate and uninterrupted drilling data wherever they operate.



Bring rig-site data to operational center in a clean, usable form.

We capture multi-source streams, secure the transfer, and deliver standards-ready outputs that plug into your customers' workflows without lock-in.

## SUBSURFACE DATA

Capture and transfer wellsite telemetry from multiple sources, then deliver it securely to operations center ready for use.

## INDUSTRY STANDARDS

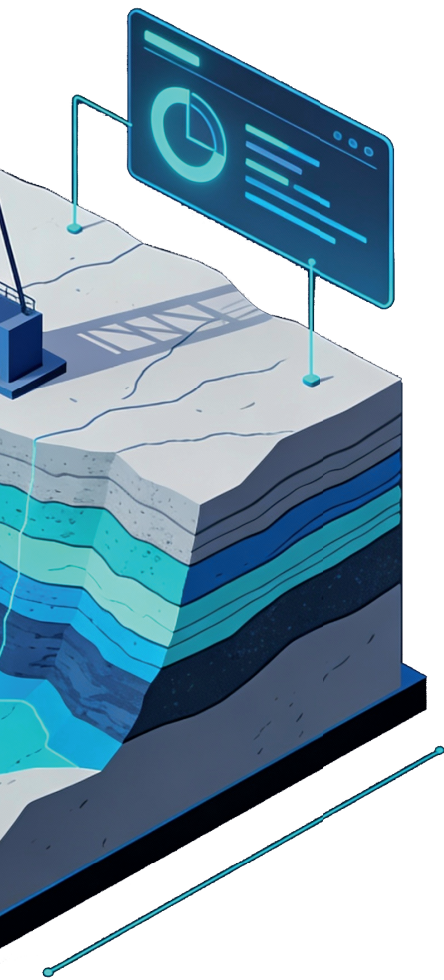
Keep exchanges consistent with WITS0, WITSML™, ETP and LAS with conversion and normalization when needed.

## ADVANCED VISUALIZATION

Browser-based dashboards for real-time and historical views so teams can monitor, share context and act faster.

## DRILLING INTELLIGENCE

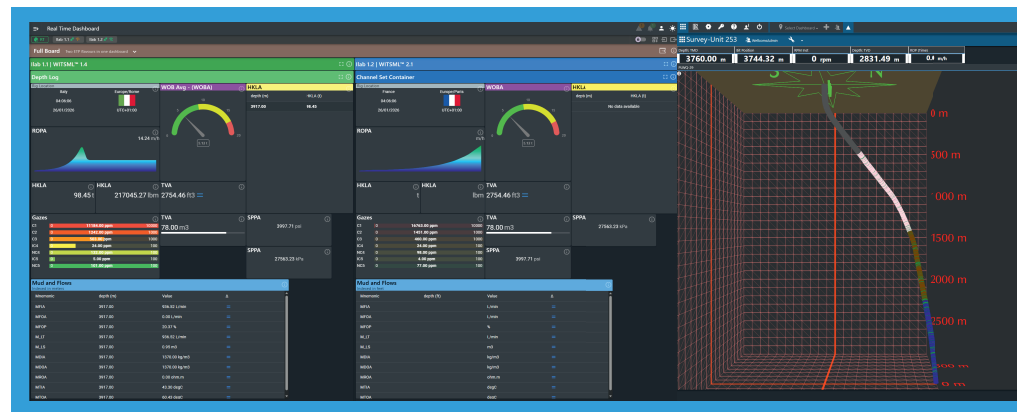
Turn raw streams into clearer operational indicators with embedded data quality controls for confident decisions.



# WHAT YOU GET

A rig-to-town data chain you can deploy across projects, designed for real-world operations and multi-client delivery. Standards-based exchanges (WITS0, WITSML™, ETP, LAS) with practical conversion and normalization when proprietary formats are in place so you integrate faster and reduce interface rework.

Web-ready access for operations and engineering teams, with data quality controls and clearer operational indicators to support daily decisions. A vendor neutral foundation that stays scalable, supportable, and easy to extend as customer requirements evolve.



## OUR MISSION

Enable service companies to deliver trusted rig-to-town data at scale. We build vendor-neutral workflows that support industry standards, handle real-world variations, and integrate smoothly with operator ecosystems so your teams can deploy faster, operate reliably, and support multiple customers with confidence.

## OUR PROCESS

Define sources and requirements, then standardize, validate and deliver. A repeatable workflow designed to scale across rigs, projects and customers.

## OUR PASSION

Turning complex drilling streams into clear, usable information so service teams spend less time troubleshooting and more time delivering value.

## AT A GLANCE



Service companies need consistent data delivery across rigs and customer environments. Wellcoms helps you capture multi-source wellsite streams, exchange data through industry standards (WITS0, WITSML™, ETP, LAS), and apply practical conversion and normalization when proprietary formats are in place. With embedded data quality controls and web-ready access, teams get clearer indicators for faster daily decisions. The result is a scalable, vendor-neutral foundation that integrates smoothly with operator ecosystems.

## READY TO DEPLOY ?

---

Deliver consistent drilling data across rigs  
without slowing down operations.



## Contact Us

Tell us your constraints and your targets.  
We'll help you deploy a scalable workflow  
that fits your customers' ecosystems.



[contact@wellcoms.fr](mailto:contact@wellcoms.fr)  
[support@wellcoms.fr](mailto:support@wellcoms.fr)  
[www.wellcoms.eu](http://www.wellcoms.eu)



Maisonneuve, Chemin de Bel Air  
07230 Chandolas, France

## BUSINESS PROPOSAL

---

Vendor-neutral real-time  
data workflows  
for service companies

WELLCOMS

---

